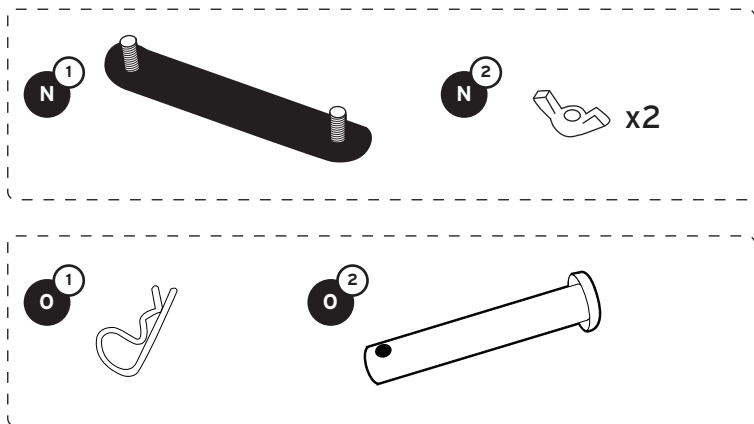


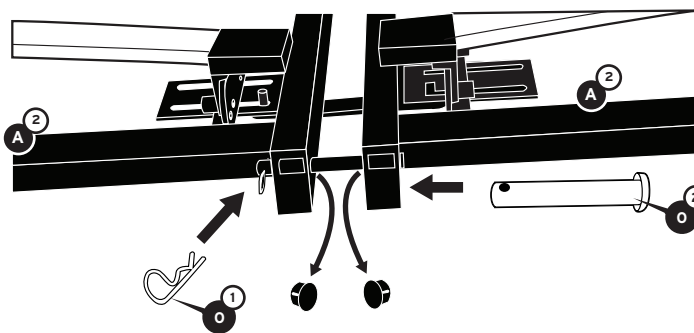
INCLUDED



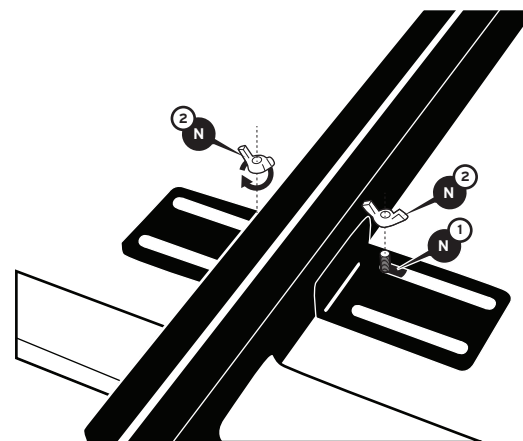
ASSEMBLY INSTRUCTIONS

INSTRUCTIONS FOR CONNECTING (2) BASES

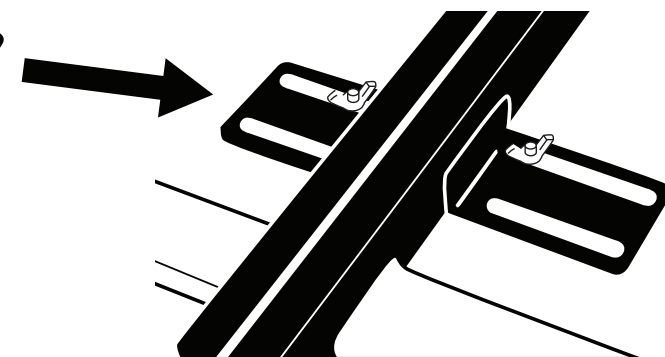
NOTE: To be installed in the HEAD SECTION of the bed at the very end of the units.



- 1 Remove plastic plug to expose holes in the head of the Freestyle base.
- 2 Place the two TXL or 2 SCK bases on foundation or platform bed.
- 3 Insert bolt **O²** through holes in both bases.
- 4 Insert retainer pin **O¹** through hole in bolt.

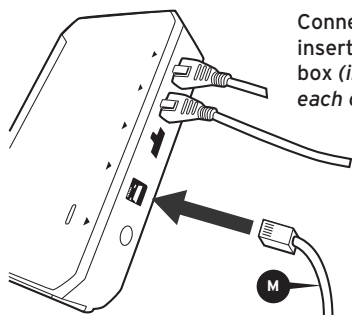


- 5 Locate the frame plates under the head and foot section of the comfortbases.
- 6 Place connector plate **N¹** under the frame plates so that the bolts are facing up.
- 7 Install and tighten the wing nuts **N²**.



INSTRUCTIONS TO PAIR 2 BASES TO ACT AS ONE

If pairing 2 bases (TXL, SCK) together:



Connect each base to the other by inserting PART M into each control box (insert into slot labeled sync on each control box).

NOTE: If you have two bases connected with a sync cable, disconnect the Wi-Fi and/or Bluetooth module from one of the two control boxes before you begin use.

RESOURCES

CUSTOMER SERVICE
1 - 855 - 581 - 3095

VISIT US ONLINE
www.glideaway.com